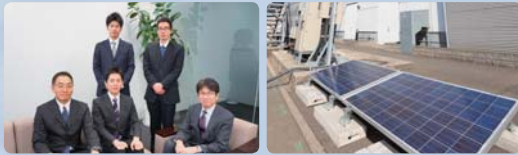


CSR

48 **CSR Special Feature 1** Initiatives to Provide Reconstruction Support in Disaster-stricken Areas through Our Business

50 **CSR Special Feature 2** Initiatives to Reduce Environmental Burden and Boost Disaster Preparedness



52 CSR Yearly Activities Report

52 Organizational Governance

58 Consumer Issues

62 Environment

67 Human Rights

68 Labour Practices

72 Fair Operating Practices

76 Community Involvement and Development

CSR activities in FY 2012 are described in this report beginning with the most prominent issues outlined under the 7 core subjects addressed by the ISO 26000 international standard for social responsibility, from the perspectives of information required for disclosure by society and of information that KDDI wishes to convey. Detailed information and comprehensive data including performance data and latest CSR topics and other matters are disclosed on the KDDI Web site (under CSR (Environment & Society)).

KDDI endeavors to actively disclose data from the 2 perspectives noted above and intends to communicate openly with all of its stakeholders as it promotes CSR.



CSR (Environment & Society) Website

<http://www.kddi.com/english/corporate/csr/>

Period Covered

This report covers business activities for FY2012 (April 1, 2012 to March 31, 2013). However, this report also contains descriptions of a few initiatives from before and after this period.

Scope of Report

Although the scope of this report is the business activities of KDDI only, this report also includes some of the activities of our Group companies.

Publication Date

Booklet: July 2013 (Next scheduled publication: July 2014)

The KDDI Web site: September 2013 (Next scheduled publication: September 2014)

Referenced Guidelines

- GRI (Global Reporting Initiative) Sustainability Reporting Guidelines 2006
- Ministry of the Environment, 2012 Environmental Reporting Guidelines
- ISO 26000: 2010 (Guidance on Social Responsibility)
- JISZ 26000: 2012 (Guidance on Social Responsibility) Japanese Industrial Standards

