



SHAPING THE NEW KDDI

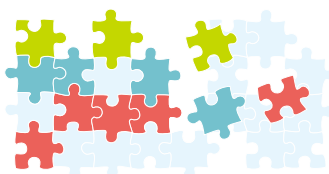
ANNUAL REPORT 2011 Results for the year ended March 31, 2011

CONTENTS

ANNUAL REPORT 2011



16 MANAGEMENT INTERVIEW



25 SPECIAL FEATURE: Stepping Stones for Shaping Our Future

• "WiMAX" is a trademark or a registered trademark of the WiMAX Forum. • "Wi-Fi" is a registered trademark of the Wi-Fi Alliance®. • "iOS" and "iPHONE" are trademarks or registered trademarks of Apple Inc. • "Chaku-Uta®" is a registered trademark of Sony Music Entertainment (Japan) Inc. • "Android™", "Android™ Market", "Google" and its logo are registered trademarks or trademarks of Google Inc. • "Skype", related trademarks and its logo are trademarks of Skype Limited. • "HTC EVO" is a trademark or a registered trademark of HTC CORPORATION. • "Facebook" is a trademark of Facebook, Inc. • "Twitter" is a registered trademark of Twitter, Inc. • "Sekai Camera" is a registered trademark of Tomchod Corporation. • "Reco Choku" and  are registered trademarks of Reco Choku Co., Ltd. • "Bluetooth" is a trademark of Bluetooth SIG, Inc. USA. • "REGZA" and "REGZA Phone" are registered trademarks of Toshiba Corporation. • "SIRIUS" is a trademark of Pantech Co., Ltd. • "BlackBerry" is a registered trademark or a trademark of Research In Motion Limited. • "Microsoft" and "Windows Mobile" are registered trademarks or trademarks of Microsoft Corporation in the United States, Japan, and other countries. • "WALKMAN" and its logo are trademarks or registered trademarks of Sony Corporation.

Disclaimer Regarding Forward-Looking Statements
Statements contained in this annual report concerning KDDI's plans, strategies, beliefs, expectations, or projections about the future, and other statements other than those of historical fact, are forward-looking statements based on management's assumptions in light of information currently available and involve risks and uncertainties. Actual results may differ materially from these statements. Potential risks and uncertainties include, but are not limited to, domestic and overseas economic conditions; fluctuations in currency exchange rates, particularly those affecting the U.S. dollar, euro, and other overseas currencies in which KDDI or KDDI Group companies do business; and the ability of KDDI and KDDI Group companies to continue developing and marketing services that enable them to secure new customers in the communications market—a market characterized by rapid technological advances, the steady introduction of new services, and intense price competition.

INTRO	1	OUR NEW STORY	
	10	TO OUR STAKEHOLDERS	
	12	CONSOLIDATED FINANCIAL SUMMARY	
Q&A	16	MANAGEMENT INTERVIEW	
		Newly Appointed President Takashi Tanaka Outlines KDDI's Roadmap to Recovery and Growth	
SPECIAL FEATURE	25	SPECIAL FEATURE	
		Stepping Stones for Shaping Our Future	
	32	SUSTAINABILITY	
	32	Responsibility as a Telecommunications Operator	
	33	KDDI Philosophy that Serves as the Foundation of CSR, TCS and CSR	
	33	Priority Issues of KDDI's CSR	
	37	Research and Development	
	38	Corporate Governance	
	38	Manifesto	
	38	Basic Policy Regarding Corporate Governance	
	40	Risk Management	
	41	Information Security	
	42	Approach to Compliance	
	43	Disclosure and IR	
	44	Internal Controls —Measures to Improve Overall Corporate Quality—	
	45	Directors and Auditors	
	46	MARKET OVERVIEW	
	46	Mobile Communications Market Data	
	49	Fixed-line Communications Market Data	
	50	OVERVIEW OF OPERATIONS	
	50	Mobile Business	
	58	Fixed-line Business	
	62	Other Business	
	63	FINANCIAL SECTION	
	111	CORPORATE OVERVIEW	



50



58



62