

Major Consolidated Subsidiaries

As of March 31, 2004

Mobile Communication Businesses

[Domestic]

Company Name	Date Established	Paid-in Capital (millions)	Voting Right Percentage	Business Field
OKINAWA CELLULAR TELEPHONE COMPANY	Jun. 91	¥ 1,414	51.5%	CDMA cellular phone services under the "au" brand
Tu-Ka Cellular Tokyo Inc.	Jul. 91	¥ 6,000	61.2%	PDC cellular phone service
Tu-Ka Cellular Tokai Inc.	Feb. 92	¥ 3,000	60.7%	PDC cellular phone service
Tu-Ka Phone Kansai Inc.	Oct. 91	¥ 6,000	54.0%	PDC cellular phone service
DDI Pocket Inc.	Jul. 94	¥ 75,251	80.9%	PHS service

[Overseas]

Company Name	Date Established	Paid-in Capital (millions)	Voting Right Percentage	Business Field
HOLA Paraguay S.A.	Sep. 98	GS 288,650	69.6%	Cellular service in Paraguay

Broadband & Consumer and Solutions-related Businesses

[Domestic]

Company Name	Date Established	Paid-in Capital (millions)	Voting Right Percentage	Business Field
KCOM Corporation	May 90	¥ 1,921	100.0%	Internet services, data transmission services, etc.
KMN Corporation	Jun. 98	¥ 626	90.0%	Internet provider service through CATV

[Overseas]

Company Name	Date Established	Paid-in Capital (millions)	Voting Right Percentage	Business Field
KDDI AMERICA, INC.	Jul. 89	US\$ 84	100.0%	Telecommunications services in the U.S.
KDDI EUROPE LTD.	Jul. 89	£ 43	100.0%	Telecommunications services in Europe
KDDI FRANCE SAS.	Oct. 96	€ 4	100.0%	Telecommunications services in France
KDDI DEUTSCHLAND GMBH.	Apr. 92	€ 1	100.0%	Telecommunications services in Germany
KDDI HONGKONG LIMITED	Jan. 89	HK\$ 101	100.0%	Telecommunications services in Hong Kong
KDDI SINGAPORE Pte. Ltd.	Sep. 89	S\$ 4	100.0%	Telecommunications services in Singapore
KDDI AUSTRALIA PTY., LIMITED	Apr. 98	A\$ 16	100.0%	Telecommunications services in Australia
KDDI do Brasil Ltda.	Apr. 96	R\$ 4	67.8%	Internet provider and IT-related business in Brazil
TELEHOUSE INTERNATIONAL CORPORATION OF AMERICA LTD.	Jun. 87	US\$ 45	58.2%	Secure IT housing, telecommunications facilities management in the U.S.
TELEHOUSE INTERNATIONAL CORPORATION OF EUROPE LTD.	Mar 88	£ 47	83.9%	Secure IT housing, telecommunications facilities management in Europe
KDDI China	Oct. 01	RMB 13	80.0%	Telecommunications consulting services in China

Telecom Infrastructure Construction

[Domestic]

Company Name	Date Established	Paid-in Capital (millions)	Voting Right Percentage	Business Field
KDDI Submarine Cable Systems Inc.	May 92	¥ 5,686	69.2%	Consulting, integration, construction, and technological development of optical-fiber submarine cable
KOKUSAI CABLE SHIP CO., LTD.	Mar. 66	¥ 135	100.0%	Construction and maintenance of submarine cables
Japan Telecommunication Engineering Service Co., Ltd.	Jun. 99	¥ 470	71.3%	Construction and maintenance of optical fiber network along highways

Sales of IT Equipment and Systems

[Domestic]

Company Name	Date Established	Paid-in Capital (millions)	Voting Right Percentage	Business Field
K-Solutions Inc.	Jul. 96	¥ 672	85.2%	Planning, development, equipment, and sales and support of communications infrastructure and systems
KDDI Technology Corporation	Aug. 88	¥ 494	100.0%	Development and consulting of image data processing system
OSI Plus Corporation	Sep. 87	¥ 490	100.0%	Designing, consulting and sales of OSI software
KDDI Media Will Corporation	Aug. 99	¥ 142	69.1%	Research, development, production and sales of digital imaging products

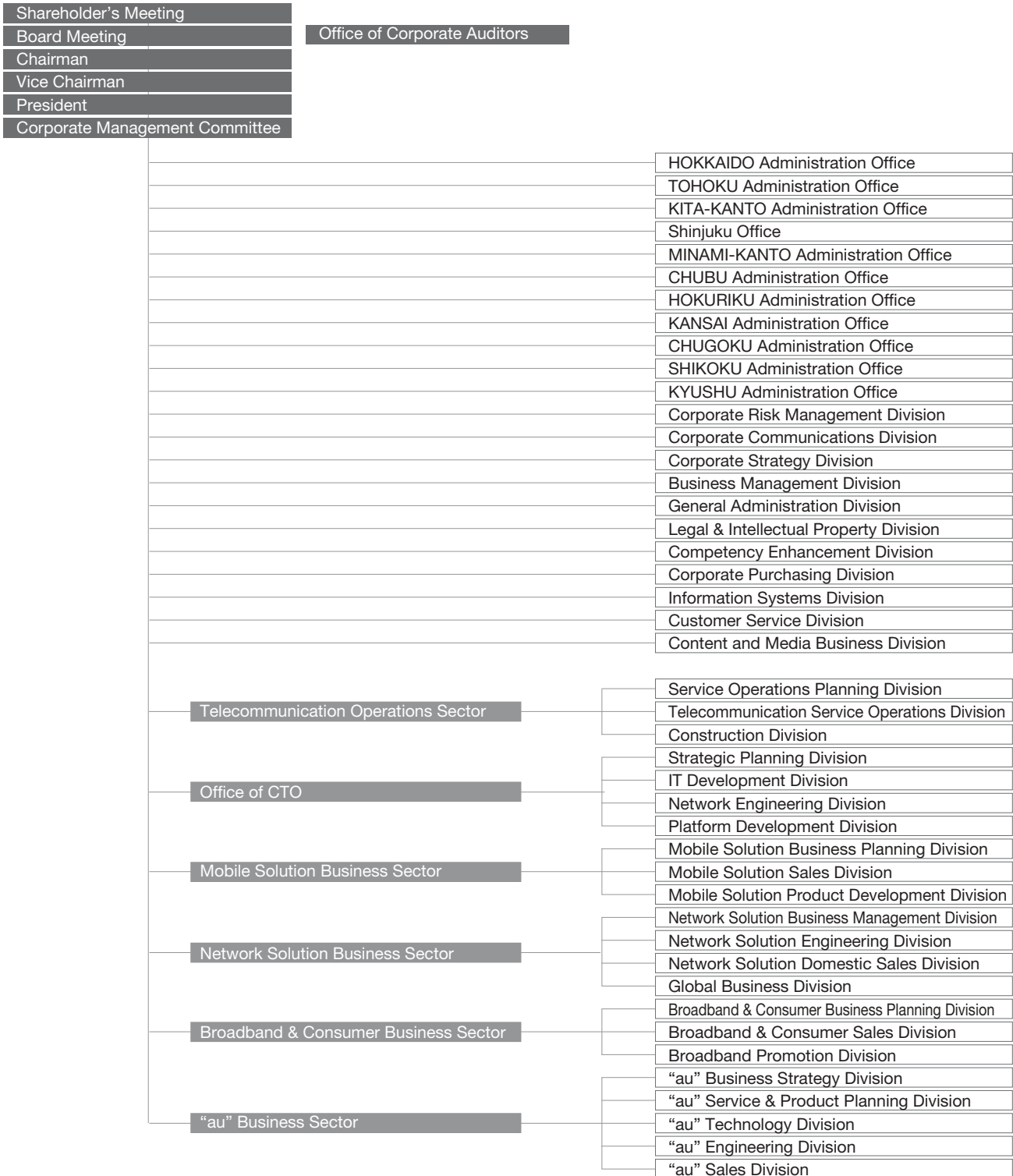
Other Services

[Domestic]

Company Name	Date Established	Paid-in Capital (millions)	Voting Right Percentage	Business Field
KDDI R&D Laboratories, Inc.	Apr. 98	¥ 2,283	91.7%	Research and development of new technologies and sales of developed products
KDDI Telemarketing Inc.	May. 96	¥ 200	100.0%	Call center services
KDDI Msat, Inc.	Apr. 77	¥ 300	100.0%	Consulting and sales of Inmarsat satellite communications services
KDDI TELESERVE Inc.	Sep. 87	¥ 100	100.0%	Temporary staff placement, recruitment consultancy and language service
a1adnet corporation	Dec. 00	¥ 490	51.0%	Planning, producing and distribution of advertisements on mobile Internet
KDDI SOGO SERVICE CO., LTD.	Apr. 74	¥ 168	100.0%	Security services; operation and administration of buildings and peripheral facilities

Organization

As of July 1, 2004



Corporate History

	DDI	IDO	KDD	TWJ	Telecommunications sector
1953			established		
1961			listed on the Second Section of the Tokyo Stock Exchange		
1964			joined in the INTELSAT the TPC-1 launched		
1970			listed on the First Section of the Tokyo Stock Exchange		
1973			International Direct Dialing service launched		
1976			the TPC-2 launched		
1977			joined in the INMARSAT		
1984	established			established	
1985					liberalization of the telecommunication sector
1987	domestic telephone service launched			domestic telephone service launched	
1988	cellular companies established	established			
1989	analog cellular telephone service launched				
1990					
1991					
1992			the TPC-4 launched		
1993	listed on the Second Section of the Tokyo Stock Exchange				
1994	digital cellular telephone service "PDC" launched				liberalization of sales of cellular telephones
	PHS Company (DDI Pocket) established				
1995	PHS service launched				
	listed on the First Section of the Tokyo Stock Exchange				
1996			the TPC-5 launched		
1997	Internet service "DION" launched				
1998	digital cellular telephone service "cdmaOne" launched		Merger of KDD and TWJ		the KDD law abolished
1999	Acquisition of TU-KA Group		the JIH launched		
2000	Merger of DDI, KDD and IDO				
2001	au Corporation merged to KDDI				the MYLINE registration started
2002	the Third-Generation cellular telephone service "CDMA2000 1x" launched				
2003	VoIP (Voice over IP) service launched "KDDI Hikari Plus" (FTTH Service) launched the Third-Generation cellular telephone service "CDMA 1X WIN" launched				

Notes 1) TPC : Trans Pacific Cable

2) INTELSAT : International Telecommunications Satellite Organization

3) INMARSAT : International Mobile Satellite Telecommunications Organization

4) TWJ : Teleway Japan Corporation

5) JIH : Japan Information Highway (the submarine fiber-optic cable that encircles the Japanese archipelago in a loop configuration.)

Corporate Overview

(As of March 31, 2004)

Company Name:	KDDI CORPORATION
Date of Establishment:	June 1, 1984
Business Objective:	Telecommunications business
Principal Office:	KDDI Bldg., 3-2, Nishi-shinjuku 2-chome, Shinjuku-ku, Tokyo 163-8003, Japan (Iidabashi Office) Garden Air Tower, 10-10, Iidabashi 3-chome, Chiyoda-ku, Tokyo 102-8460, Japan
President:	Tadashi Onodera
Capital:	¥141,851 million
Number of Employees:	13,128 (consolidated)

Directors, Auditors and Vice Presidents

(As of July 1, 2004)

Directors

Chairman, Member of the Board

Mitsuo Igarashi

President, Member of the Board

Tadashi Onodera

Executive Vice President, Member of the Board

Masahiro Yamamoto

Members of the Board, Senior Vice Presidents

Nobuhiko Nakano

Yasuhiko Ito

Satoshi Nagao

Members of the Board, Associate Senior Vice Presidents

Nobuo Nezu

Hirofumi Morozumi

Members of the Board

Jiro Ushio

Yasuo Nishiguchi

Hiroshi Okuda

Auditors

Standing Statutory Auditors

Akira Hioki

Yoshiaki Tsuji

Statutory Auditors

Hideki Ishida

Katsuaki Watanabe

Vice Presidents

Associate Senior Vice Presidents

Masaru Takahashi

Kaoru Tachibana

Kazuyuki Tsukada

Vice Presidents

Hitomi Murakami

Tomoyoshi Kaneko

Yuji Tsuda

Hiroshi Kitagawa

Yuzo Ishikawa

Hisashi Fujisita

Seiji Hamada

Toshiyuki Fujino

Shunsuke Oyama

Yuji Fujimoto

Yutaka Yasuda

Yoshiharu Shimatani

Hideo Okinaka

Takahito Shigeno

Hideo Yuasa

Toru Kawai

Takashi Tanaka

Makoto Takahashi

Hiromu Naratani

Ichiro Kondou

Kantarou Nakaoka

Yoshinori Shirakawa

Toshio Maki

Kiyoshi Sato

Stock Information

As of March 31, 2004

Total Number of Shares Authorized:	7,000,000
Total Number of Shares Issued and Outstanding:	4,240,880.38
Number of Shareholders:	129,303

Major Shareholders

Name of Corporate Entity	Number of Shares Held	Voting Right Percentage
Kyocera Corporation	572,675.87	13.62%
Toyota Motor Corporation	497,425.23	11.83%
Japan Trustee Services Bank, Ltd. (Trust Account)	362,213.00	8.61%
The Master Trust Bank of Japan, Ltd. (Trust Account)	306,382.00	7.28%
The Chase Manhattan Bank N.A. London	140,022.00	3.33%
State Street Bank & Trust Co.	88,848.00	2.11%
Ministry of Posts and Telecommunications Mutual Aid Association	72,641.45	1.72%
The Tokyo Electric Power Company, Incorporated	56,340.55	1.34%
Mizuho Corporate Bank, Ltd.	54,608.24	1.29%
JP Morgan Chase Oppenheimer Funds JASDEC Account	47,217.00	1.12%

Distribution of Shares

	Number of Shareholders	Number of Shares Held	Percentage of Total Shares
Financial institutions	238	1,300,003.29	30.65%
Securities firms	74	35,053.80	0.83%
Foreign corporations, etc.	649	1,011,400.86	23.85%
Individuals and other	126,753	334,255.94	7.88%
Other corporations	1,589	1,560,166.49	36.79%